

Demographic Characteristics and Trends: Texas and San Antonio Area

Alamo Regional Data Alliance



Texas
Demographic
Center



States with Most Population Growth, 2010 to 2020



	2010 Population	2020 Population	Numeric Change 2010-2020	Percent Change 2010-2020
United States	308,745,538	331,449,281	22,703,743	7.4%
Texas	25,145,561	29,145,505	3,999,944	15.9%
Florida	18,801,310	21,538,187	2,736,877	14.6%
California	37,253,956	39,538,223	2,284,267	6.1%
Georgia	9,687,653	10,711,908	1,024,255	10.6%
Washington	6,724,540	7,705,281	980,741	14.6%
North Carolina	9,535,483	10,439,388	903,905	9.5%
New York	19,378,102	20,201,249	823,147	4.2%
Arizona	6,392,017	7,151,502	759,485	11.9%
Colorado	5,029,196	5,773,714	744,518	14.8%
Virginia	8,001,024	8,631,393	630,369	7.9%
Tennessee	6,346,105	6,910,840	564,735	8.9%
Utah	2,763,885	3,271,616	507,731	18.4%

States With an Undercount or Overcount

Undercount

State	Net coverage error rate	
	Rate	90 percent confidence interval
Arkansas	-5.04	-8.68 to -1.40
Florida	-3.48	-4.98 to -1.98
Illinois	-1.97	-3.43 to -0.51
Mississippi	-4.11	-6.79 to -1.43
Tennessee	-4.78	-7.26 to -2.30
Texas	-1.92	-3.27 to -0.57

Overcount

State	Net coverage error rate	
	Rate	90 percent confidence interval
Delaware	5.45	0.81 to 10.09
Hawaii	6.79	4.03 to 9.55
Massachusetts	2.24	0.50 to 3.98
Minnesota	3.84	2.24 to 5.44
New York	3.44	1.89 to 4.99
Ohio	1.49	0.39 to 2.59
Rhode Island	5.05	2.70 to 7.40
Utah	2.59	0.57 to 4.61

May 19, 2022

Texas had an undercount of -0.97 in 2010 (not statistically different from 0)



Percent Net Coverage Error by Race and Hispanic Origin: 2010 and 2020

Race or Hispanic Origin	2010	2020	Is there a significant difference between 2020 and 2010?
Total	0.01	-0.24	
Race alone or in combination			
White	0.54*	0.66*	No
Non-Hispanic White alone	0.83*	1.64*	Yes
Black or African American	-2.06*	-3.30*	No
Asian	0.00	2.62*	Yes
American Indian or Alaska Native	-0.15	-0.91*	No
On Reservation	-4.88*	-5.64*	No
American Indian Areas Off Reservation	3.86	3.06	No
Balance of the United States	0.05	-0.86*	No
Native Hawaiian or Other Pacific Islander	-1.02	1.28	No
Some Other Race	-1.63*	-4.34*	Yes
Hispanic or Latino	-1.54*	-4.99*	Yes

*Net coverage error is statistically significantly different from 0.

States with Most Population Growth, 2020 to 2022



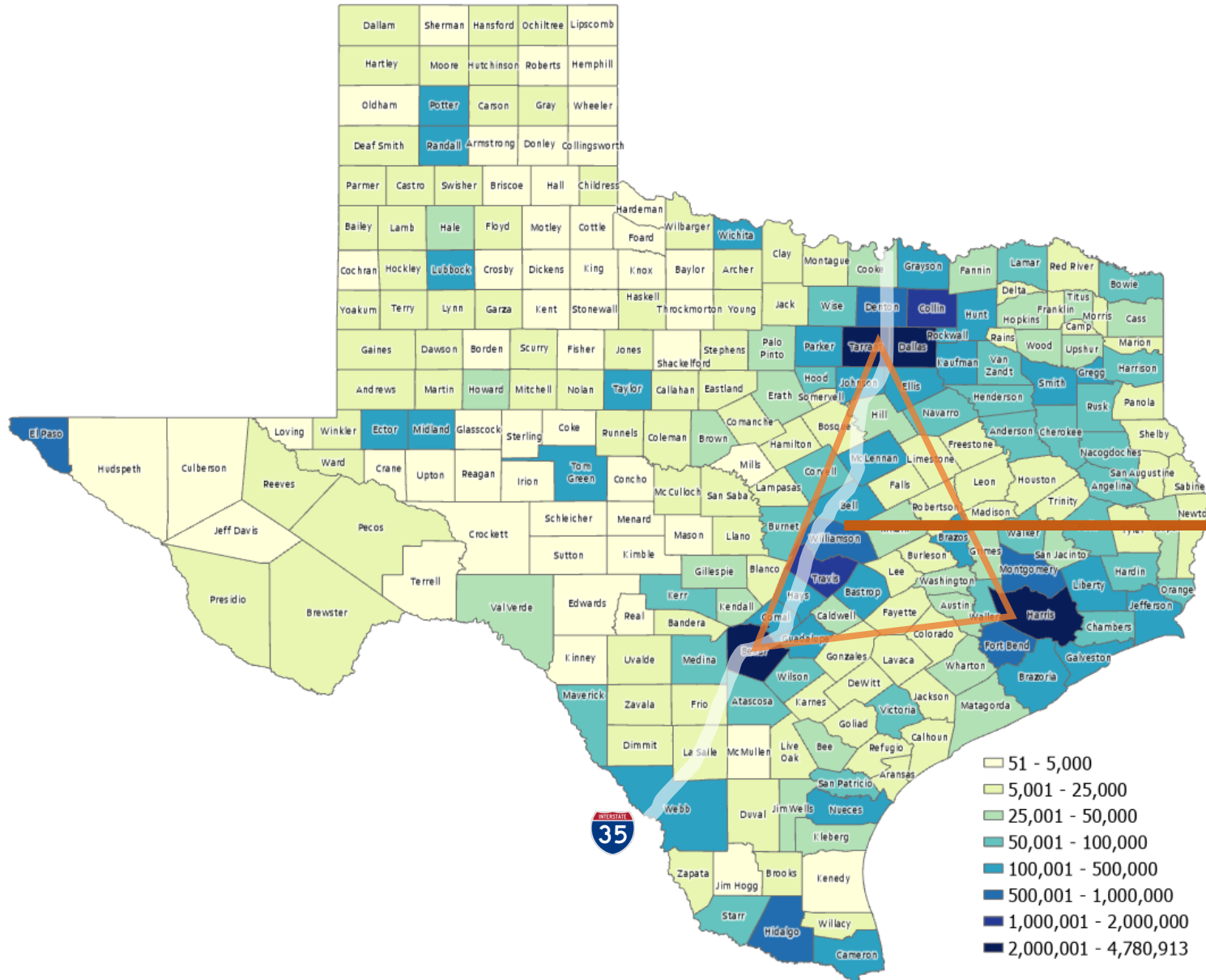
Population Estimate (as of July 1)

Geographic Area	2020	2021	2022	Change 21-22	Rank Change 21-22	Pct. Change 21-22	Rank Pct. Change 21-22
United States	331,511,512	332,031,554	333,287,557	1,256,003		0.4%	
Texas	29,232,474	29,558,864	30,029,572	470,708	1	1.6%	4
Florida	21,589,602	21,828,069	22,244,823	416,754	2	1.9%	1
North Carolina	10,449,445	10,565,885	10,698,973	133,088	3	1.3%	9
Georgia	10,729,828	10,788,029	10,912,876	124,847	4	1.2%	12
Arizona	7,179,943	7,264,877	7,359,197	94,320	5	1.3%	8
South Carolina	5,131,848	5,193,266	5,282,634	89,368	6	1.7%	3
Tennessee	6,925,619	6,968,351	7,051,339	82,988	7	1.2%	11
Washington	7,724,031	7,740,745	7,785,786	45,041	8	0.6%	16
Utah	3,283,785	3,339,113	3,380,800	41,687	9	1.2%	10
Idaho	1,849,202	1,904,314	1,939,033	34,719	10	1.8%	2

'20-'21 -> **902**
new Texans per day

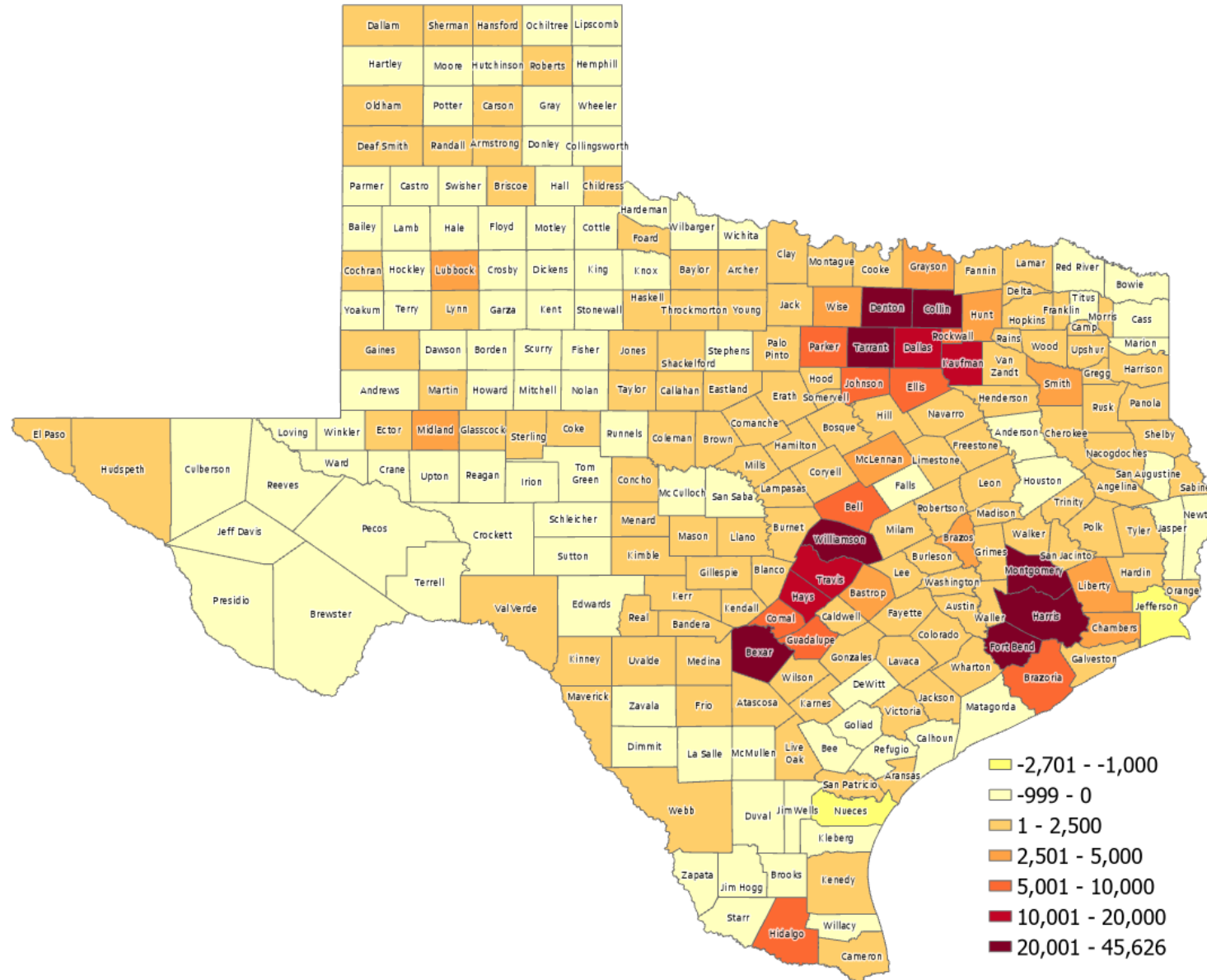
'21-'22 -> **1,290**
new Texans per day

2022 Estimated Population, Texas Counties



87%

Estimated Numeric Change, Texas Counties, 2021-2022



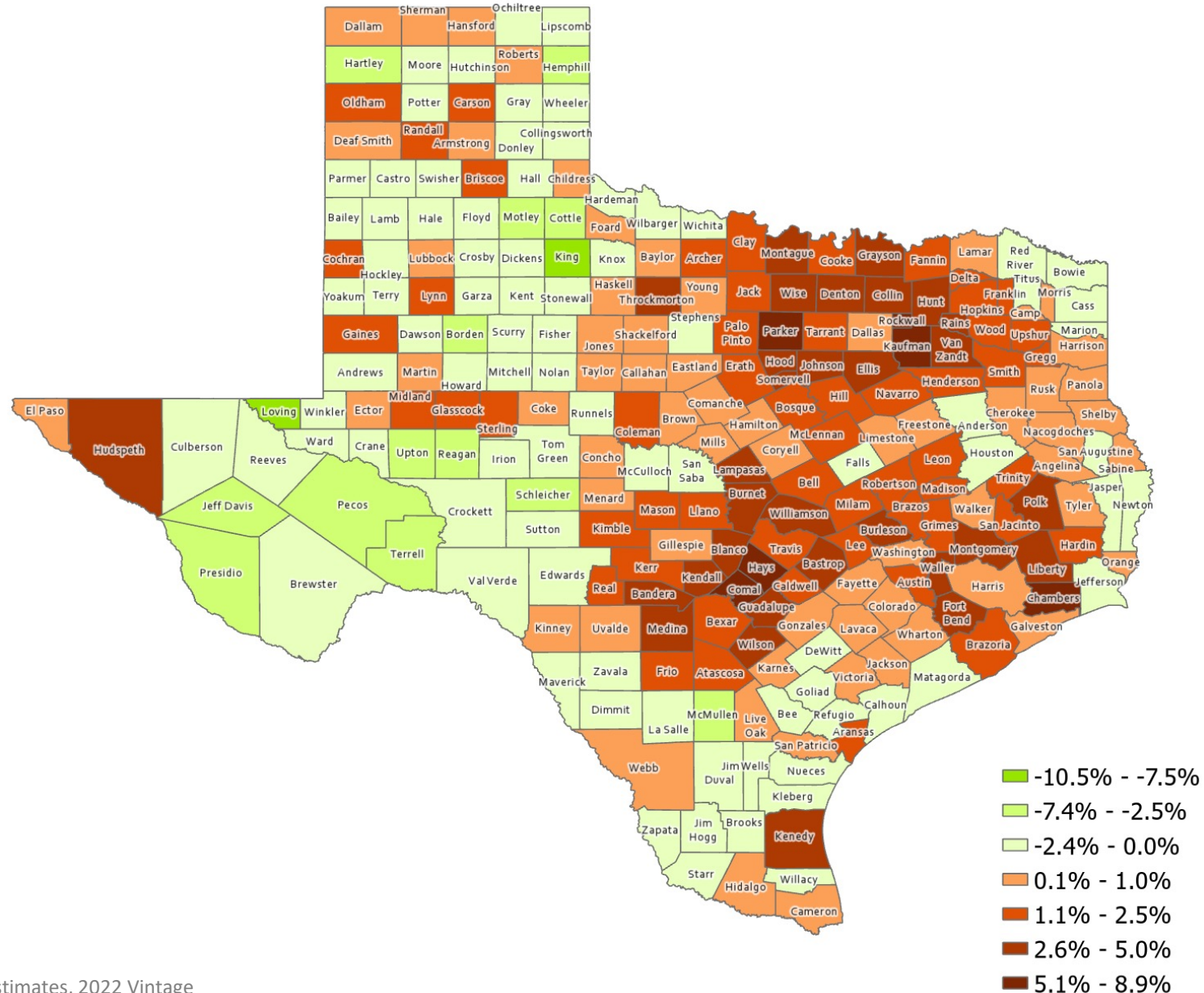
95 of Texas counties lost population

Top Counties for Numeric Growth in Texas, 2021-2022



County	US Rank	2022 Population Estimate	Population Change 2021-2022	Percent of Change from Natural Increase	Percent of Change from International Migration	Percent of Change from Domestic Migration
Harris	2	4,780,913	45,626	63.6%	78.7%	-42.2%
Collin	3	1,158,696	44,246	13.9%	17.8%	68.3%
Denton	4	977,281	33,424	16.7%	10.8%	72.5%
Fort Bend	7	889,146	29,022	15.3%	23.1%	61.6%
Bexar	9	2,059,530	28,635	27.7%	18.3%	54.1%
Montgomery	10	678,490	28,229	10.3%	7.2%	82.5%
Williamson	12	671,418	26,967	13.6%	8.0%	78.4%
Tarrant	13	2,154,595	25,193	39.6%	32.0%	28.3%
Travis	20	1,326,436	17,892	47.4%	39.8%	12.9%
Kaufman	29	172,366	14,150	6.0%	1.1%	92.9%
Hays	36	269,225	13,160	11.1%	3.7%	85.3%
Dallas	38	2,600,840	12,886	115.7%	128.5%	-144.2%
Comal	48	184,642	9,751	0.5%	0.2%	99.3%
Brazoria	50	388,181	9,323	16.2%	9.2%	74.6%
Ellis	52	212,182	9,075	8.8%	1.8%	89.3%
Parker	53	165,834	8,868	2.7%	1.3%	96.0%

Estimated Percent Change, Texas Counties, 2021-2022



Top Counties for Percent Growth in Texas, 2021-2022*



County	US Rank	2022 Population Estimate	Population Change 2021-2022	Percent Population Change 2021-2022	Percent of Population Change from Natural Increase	Percent of Population Change from International Migration	Percent of Population Change from Domestic Migration
Kaufman	1	172,366	14,150	8.9%	6.0%	1.1%	92.9%
Rockwall	4	123,208	6,659	5.7%	6.6%	2.6%	90.7%
Comal	5	184,642	9,751	5.6%	0.5%	0.2%	99.3%
Parker	6	165,834	8,868	5.6%	2.7%	1.3%	96.0%
Hays	7	269,225	13,160	5.1%	11.1%	3.7%	85.3%
Liberty	12	101,992	4,610	4.7%	0.7%	2.9%	96.4%
Williamson	13	671,418	26,967	4.7%	6.3%	1.2%	92.5%
Wise	20	74,895	3,007	4.3%	10.3%	7.2%	82.5%
Montgomery	22	678,490	28,229	4.3%	4.2%	1.1%	94.8%
Bastrop	24	106,188	4,022	4.2%	13.6%	8.0%	78.4%
Johnson	27	195,506	8,064	4.2%	0.8%	1.9%	97.3%
Waller	31	61,894	2,420	4.1%	10.5%	3.4%	86.1%
Hunt	32	108,282	4,824	4.0%	13.9%	17.8%	68.3%
Collin	36	1,158,696	44,246	3.9%	8.7%	2.1%	89.2%
Fort Bend	46	889,146	29,022	3.4%	15.3%	23.1%	61.6%

Population Growth in the Year After the Pandemic Started



Fastest-Growing Cities From July 2020 to July 2021

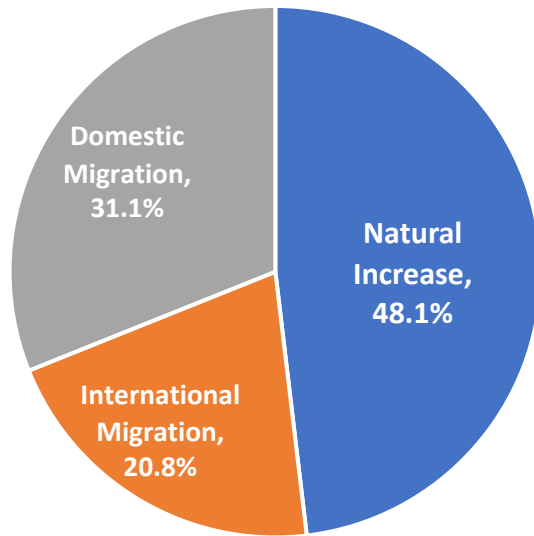
MAY 26, 2022



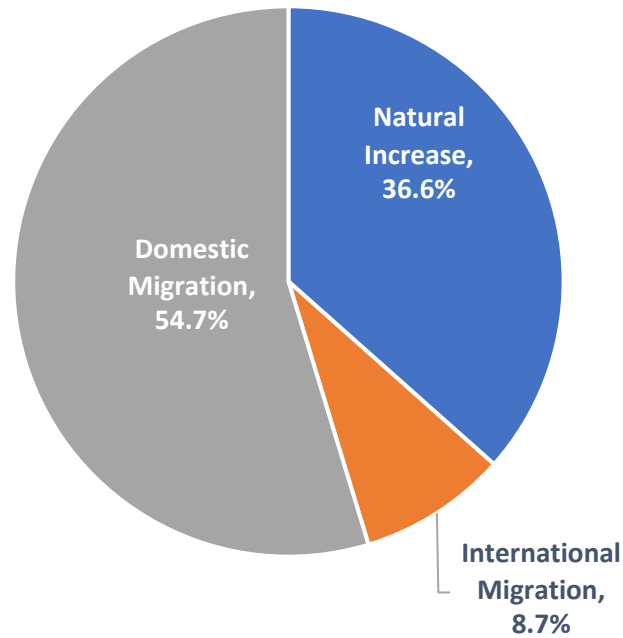
Estimated Components of Population Change for Texas, 2010-2020 and 2020-2021, 2021-2022



2010 to 2020

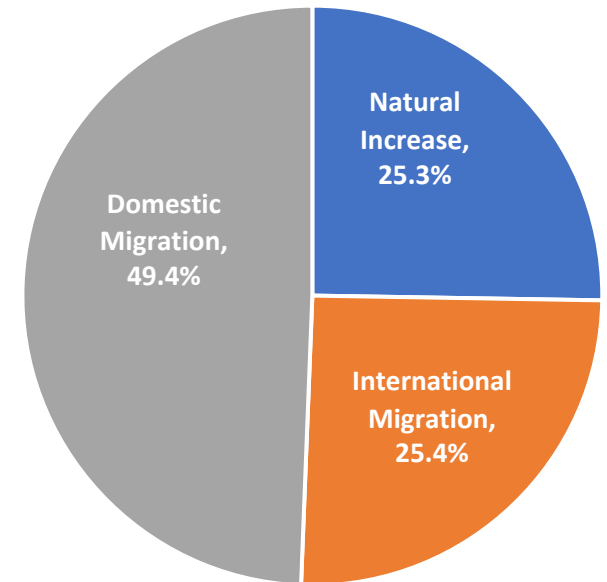


2020 to 2021



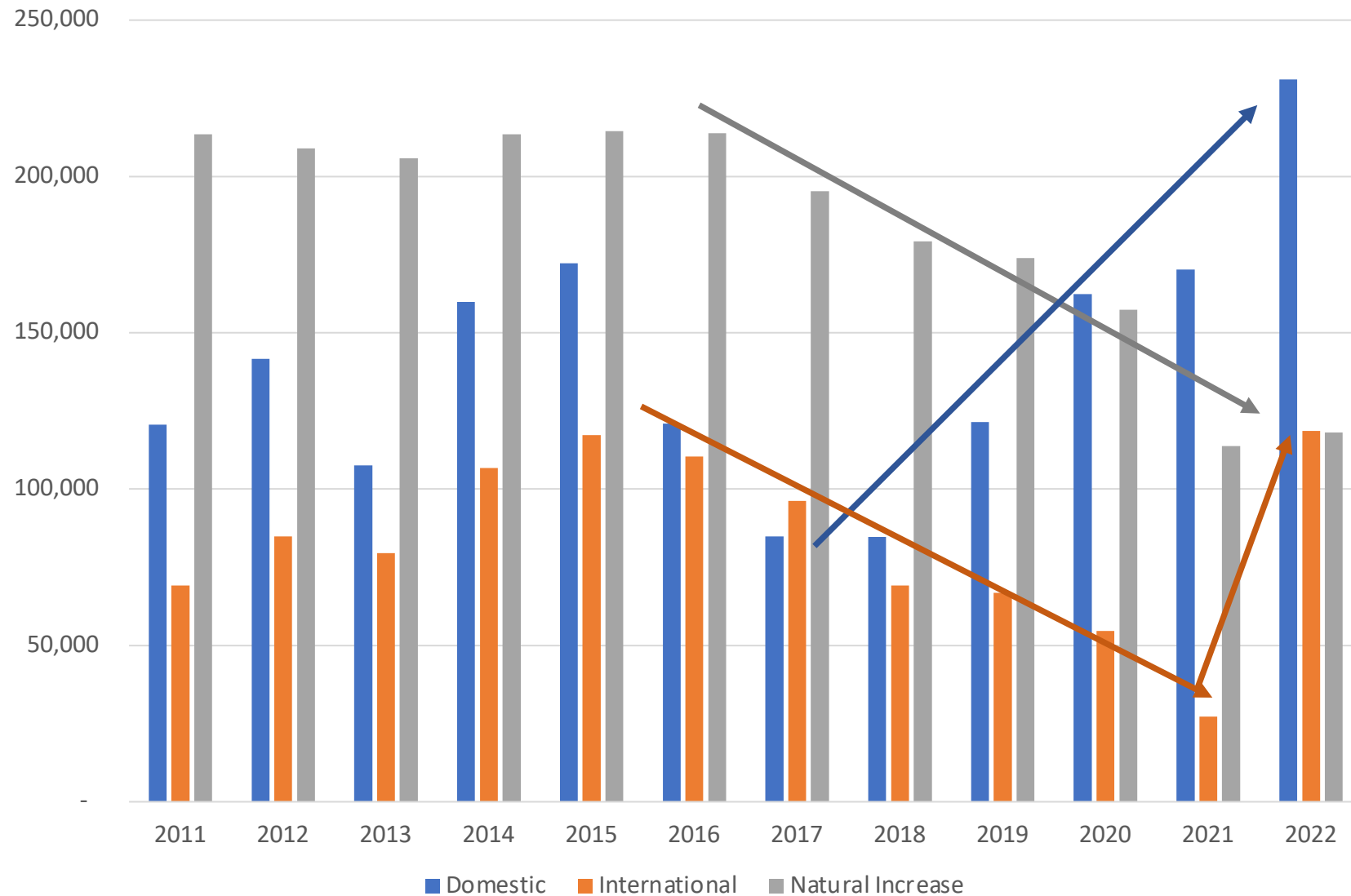
326,390

2021 to 2022

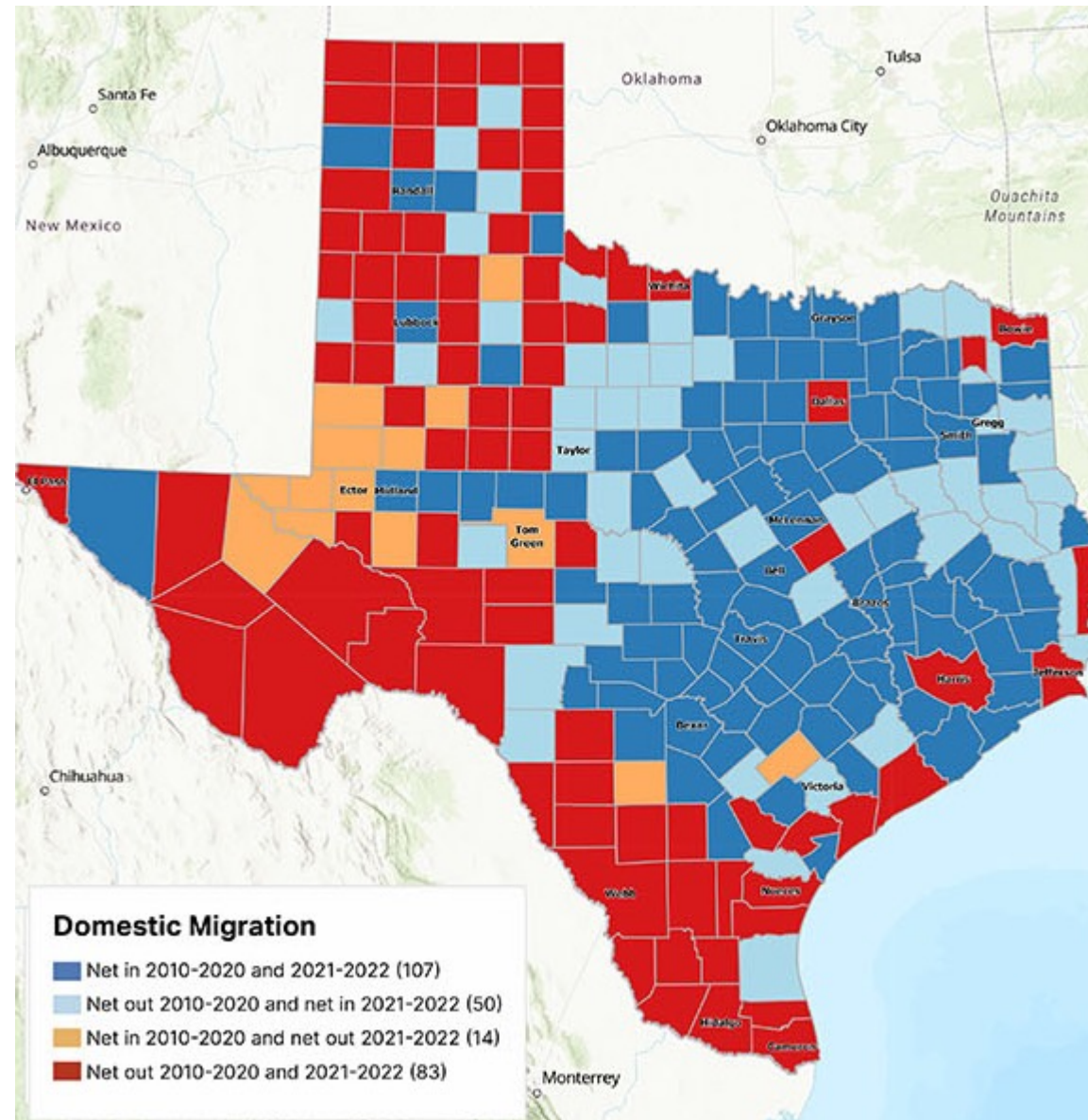


470,708

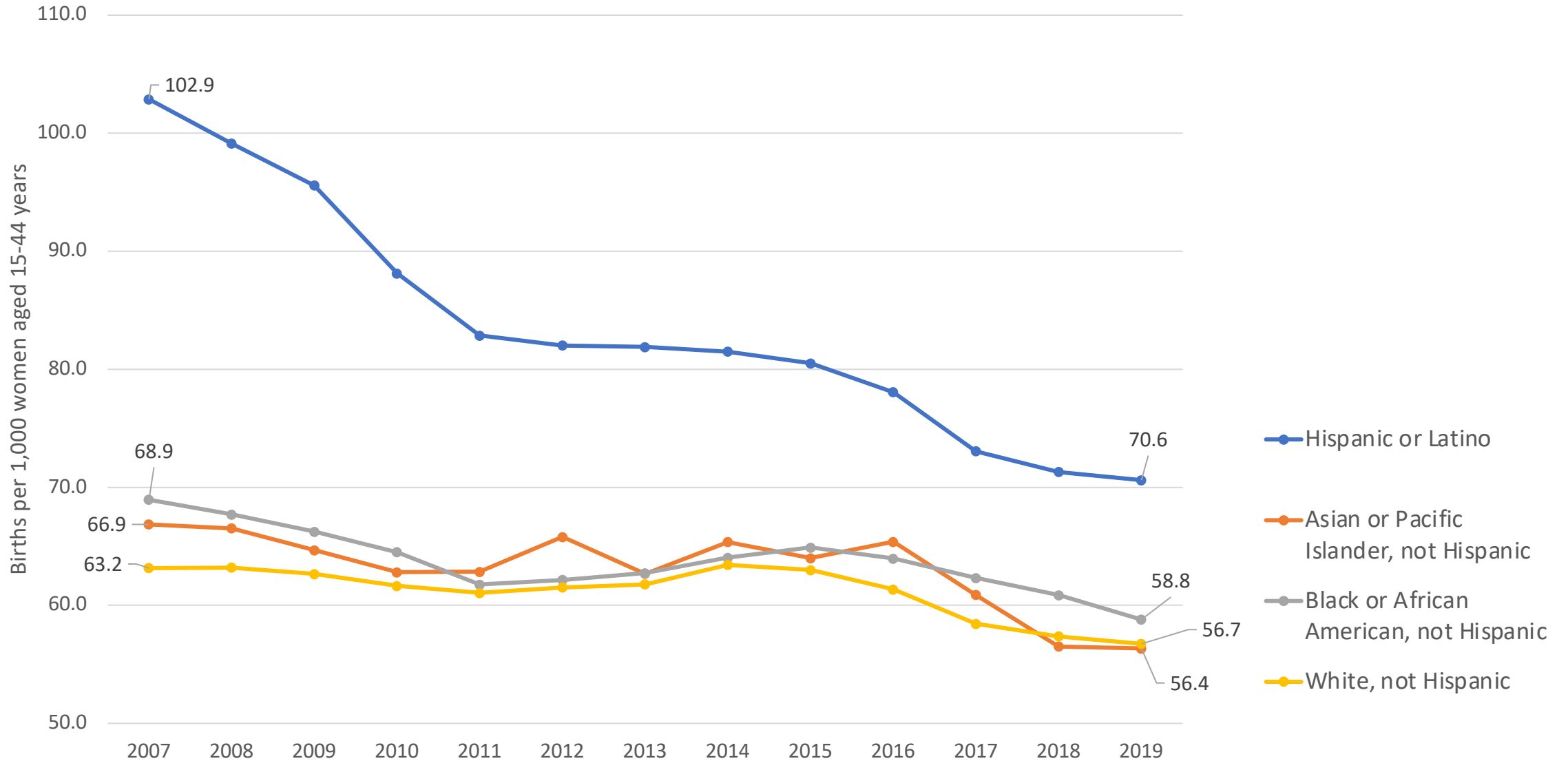
Estimated Domestic and International Migration for Texas, 2011-2021

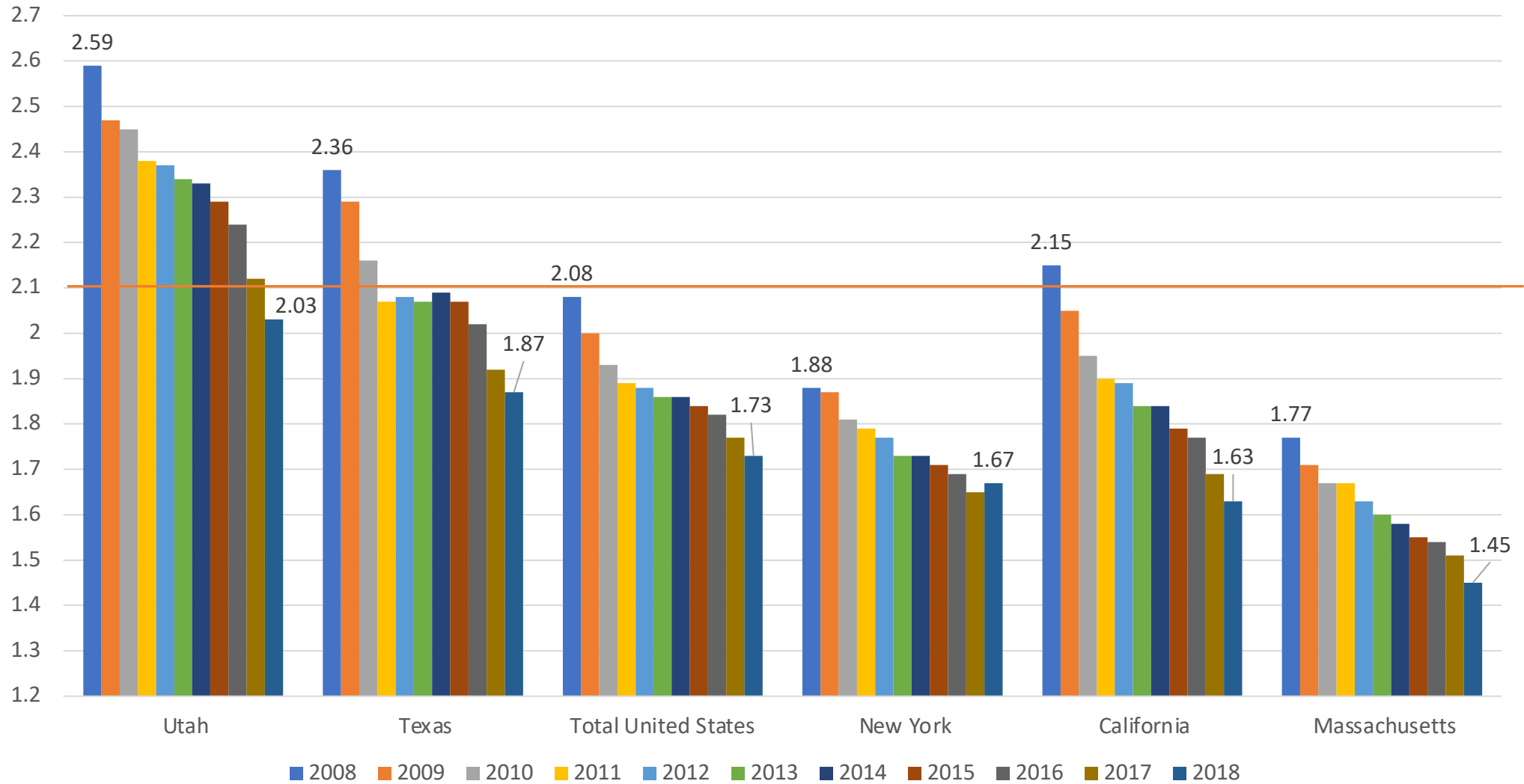
Estimated Change from Domestic Migration Comparing 2010-20 and 2021-22, Texas Counties



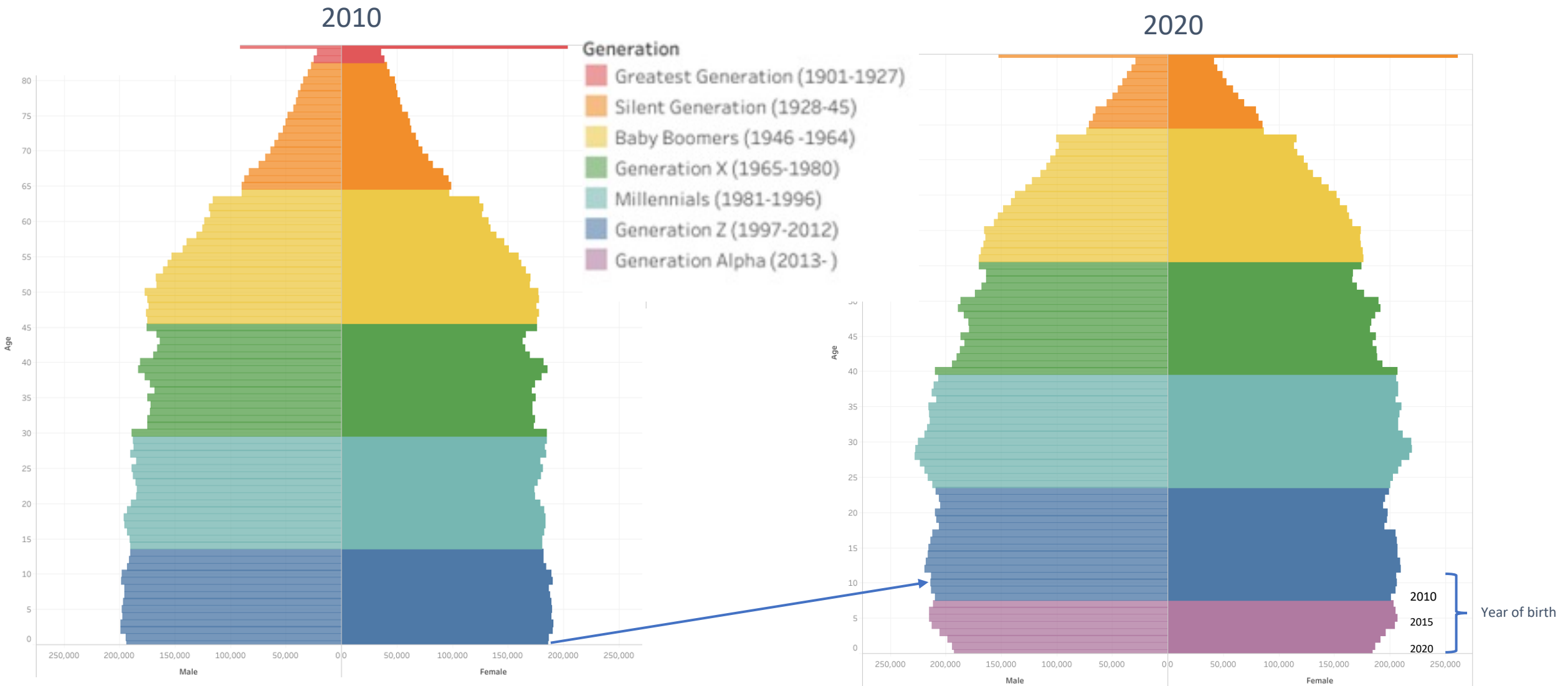
Texas Birth Rates, 2007-2019



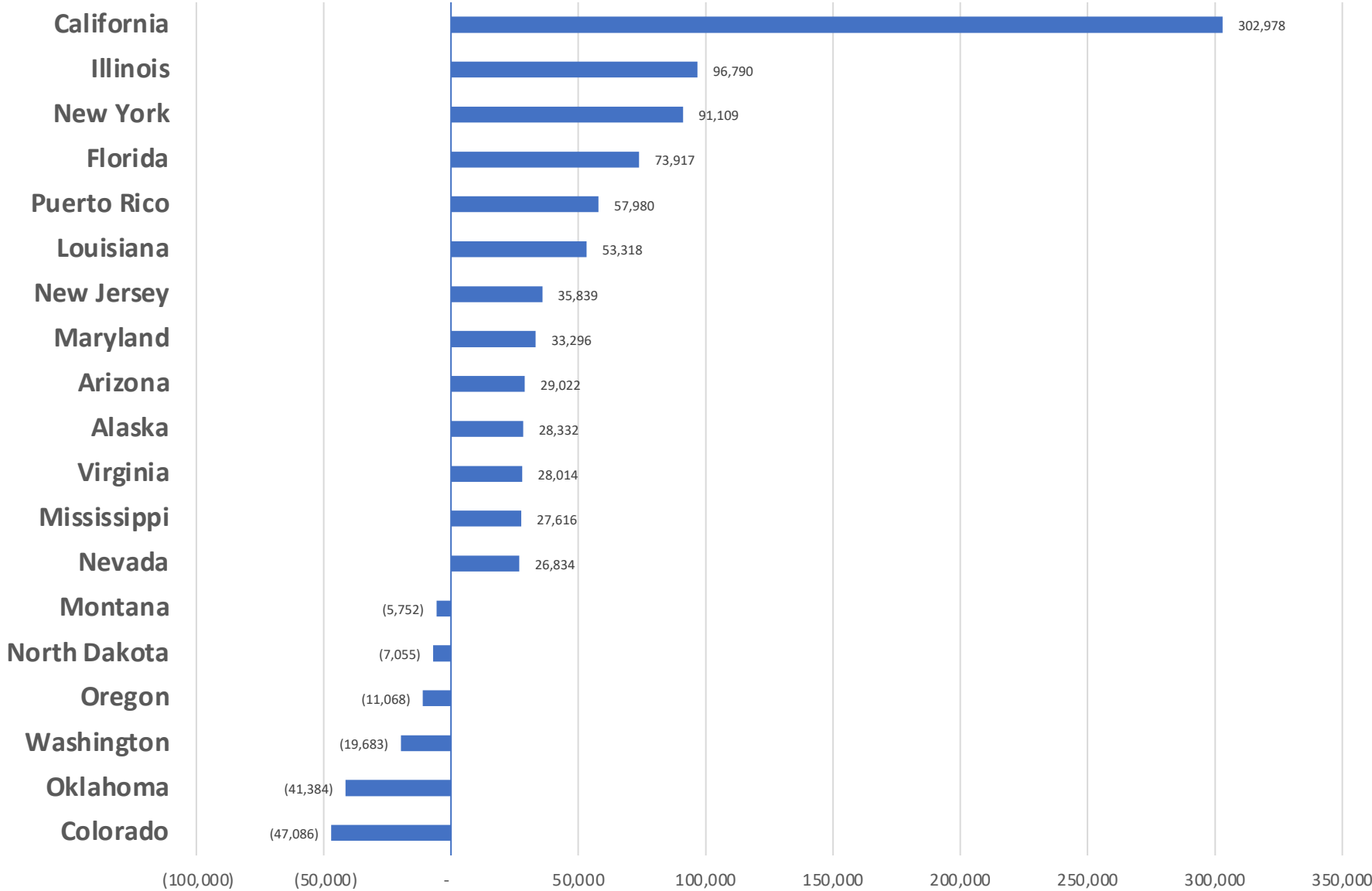
Total Fertility Rate for Select States, 2008-2018



Generational Population Pyramids, Texas, 2010 and 2020



Estimated Net Domestic Migrants Between Texas and Other States, 2010-2019



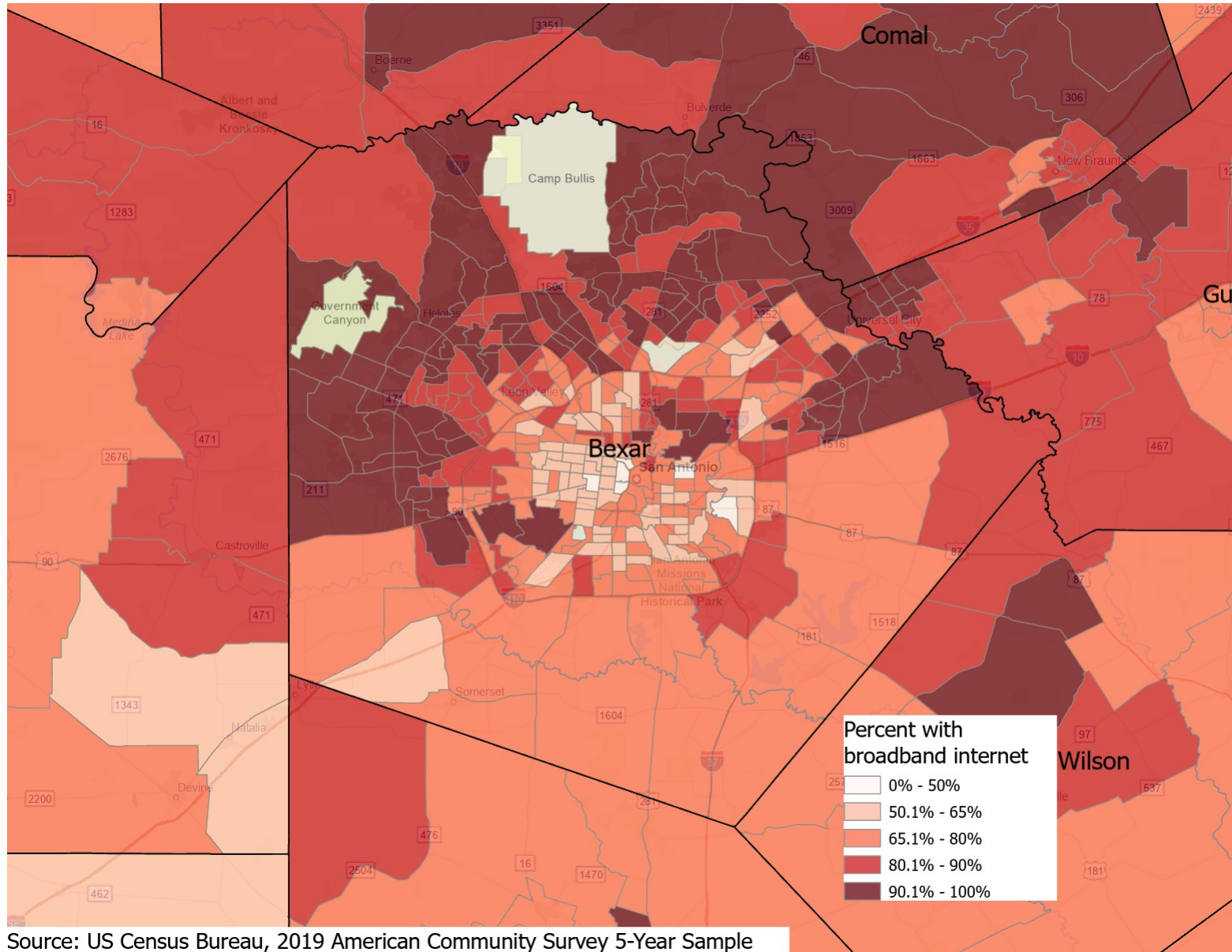
Source: U.S. Census Bureau, State-to-State Migration Flows, 2010-2019

Housing, Education, Health, Texas, Bexar County, San Antonio, 2015-2019



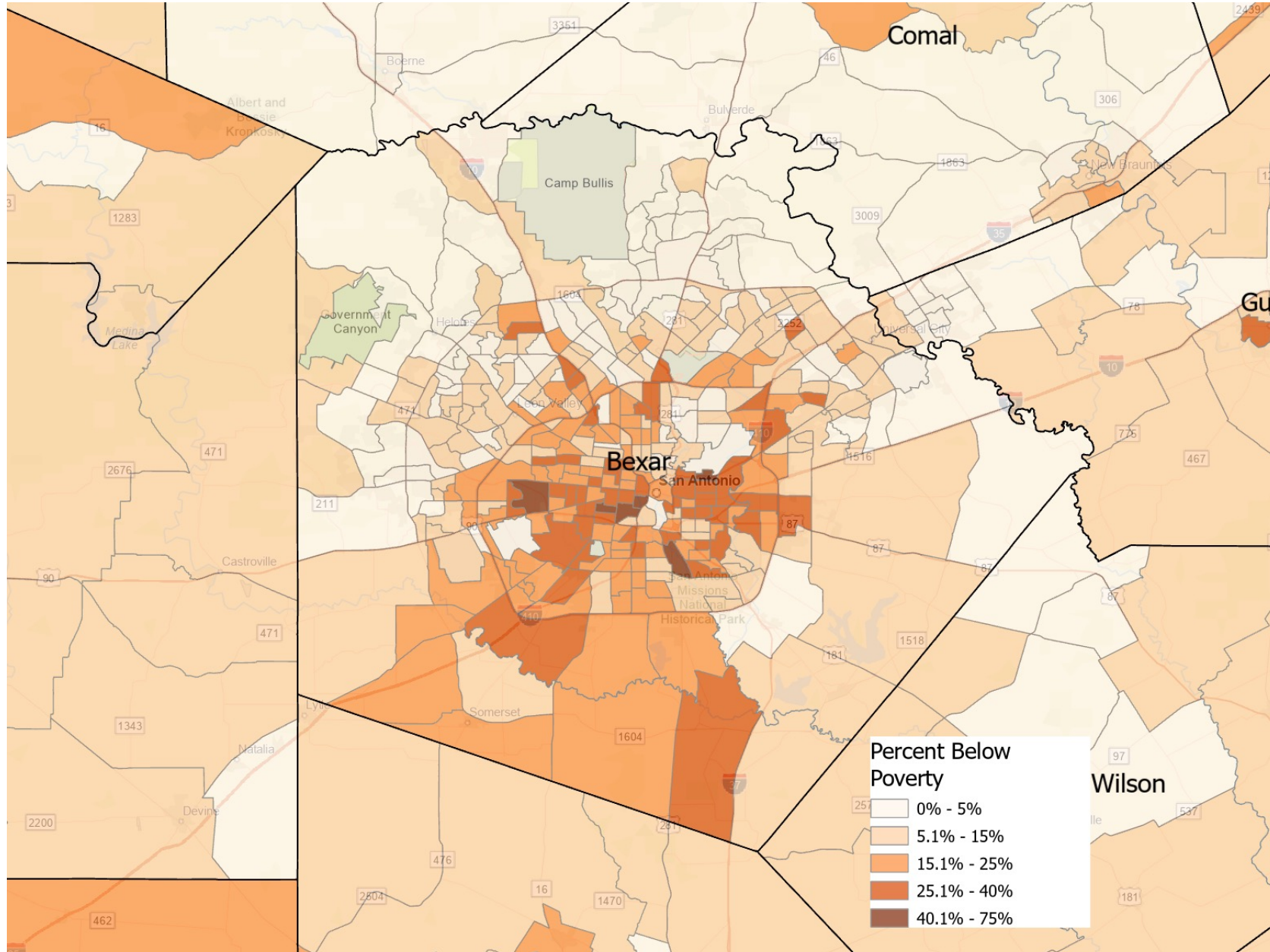
	Texas	Bexar County	San Antonio
Computer and Internet Use			
Households with a computer	91.0%	91.1%	89.9%
Households with a broadband Internet subscription	81.9%	81.3%	79.1%
Education			
High school graduate or higher, percent of persons age 25 years+	83.7%	84.2%	82.4%
Bachelor's degree or higher, percent of persons age 25 years	29.9%	28.0%	26.0%
Health			
With a disability, under age 65 years	7.9%	10.6%	11.1%
Persons without health insurance, under age 65 years	20.8%	19.1%	18.7%
Housing			
Owner-occupied housing unit rate	62.0%	58.5%	53.9%
Median value of owner-occupied housing units	\$172,500	\$161,800	\$146,400
Median selected monthly owner costs -with a mortgage	\$1,606	\$1,467	\$1,386
Median selected monthly owner costs -without a mortgage	\$514	\$491	\$475
Median gross rent	\$1,045	\$1,015	\$992

Percent of households with broadband internet, Census Tracts, 2019



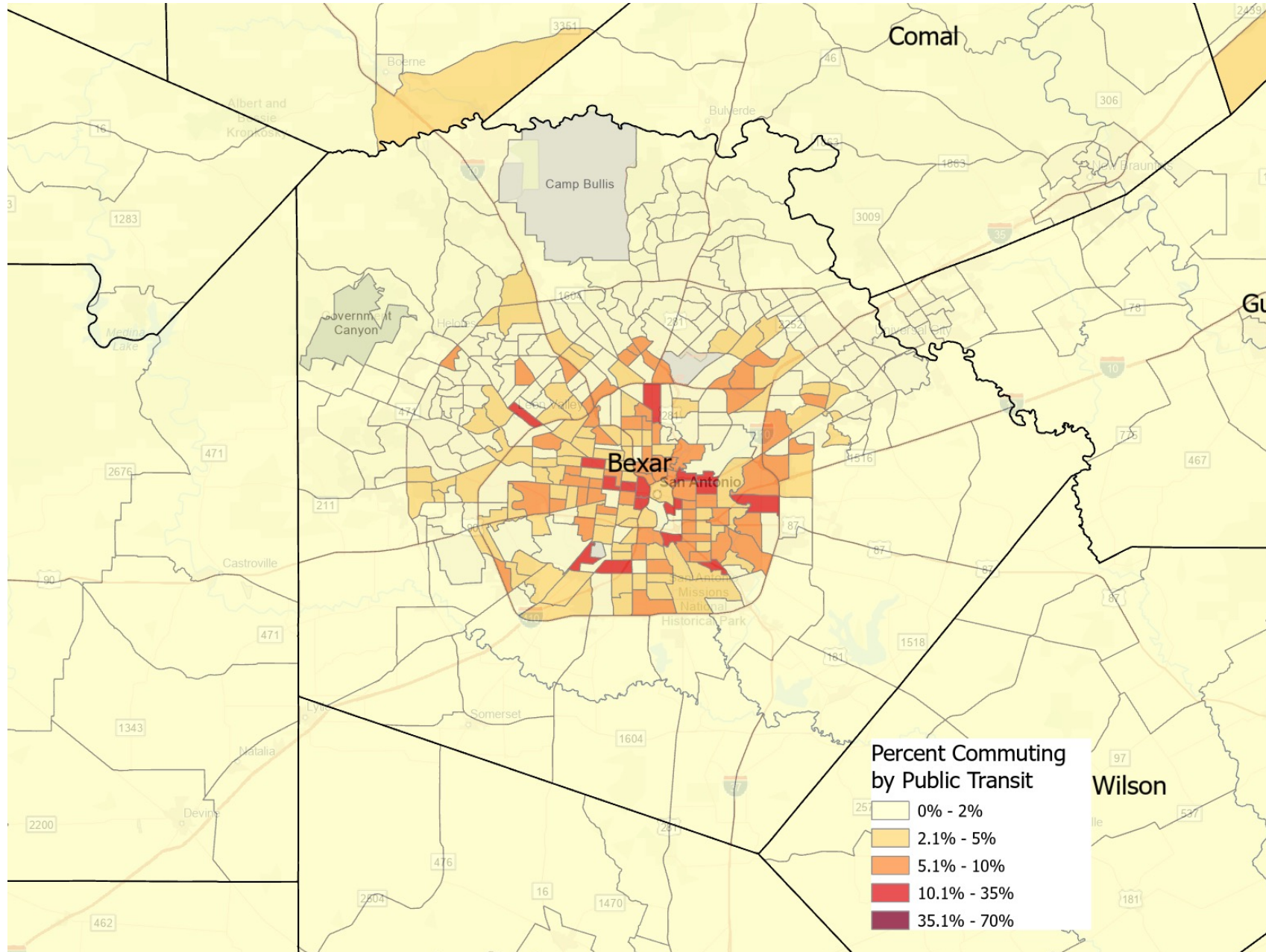
Source: US Census Bureau, 2019 American Community Survey 5-Year Sample

Percent of persons at or below poverty, Census Tracts, 2019



Source: US Census Bureau, 2019 American Community Survey 5-Year Sample

Percent of persons commuting by public transit, Census Tracts, 2019

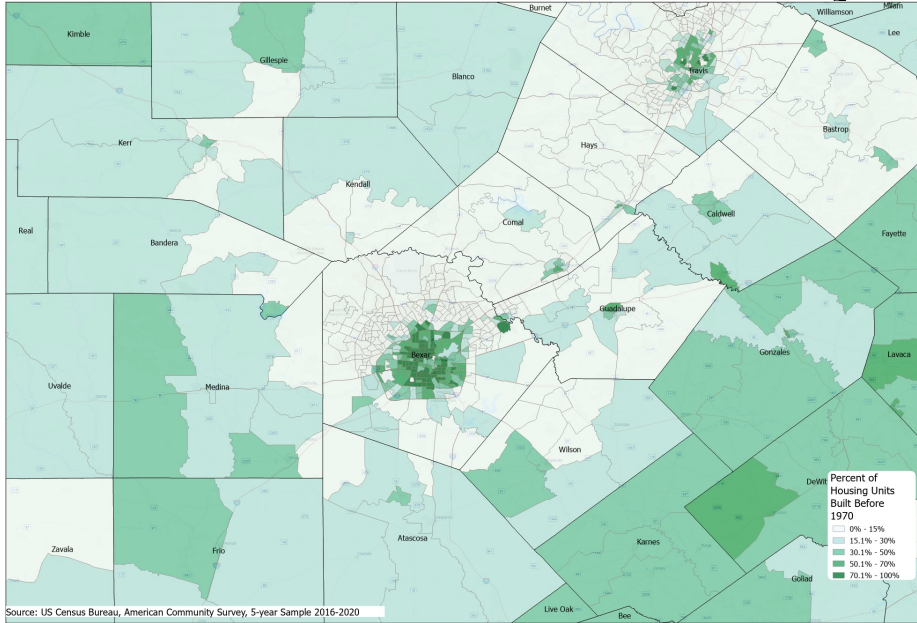


Source: US Census Bureau, 2019 American Community Survey 5-Year Sample

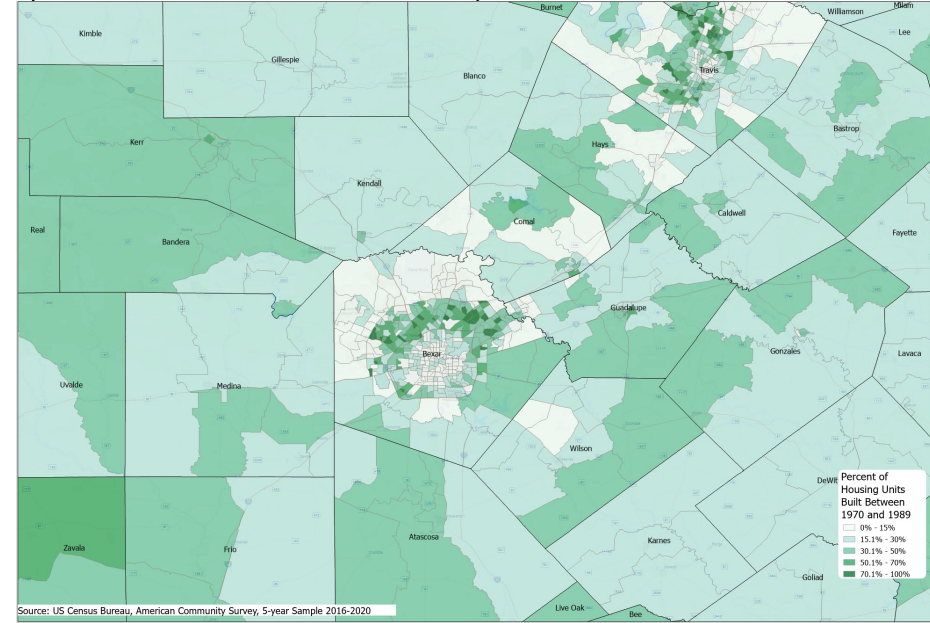
Estimated Percent of Housing Units Built by Time Period, San Antonio Bexar County Area, Census Tracts, 2016-2020



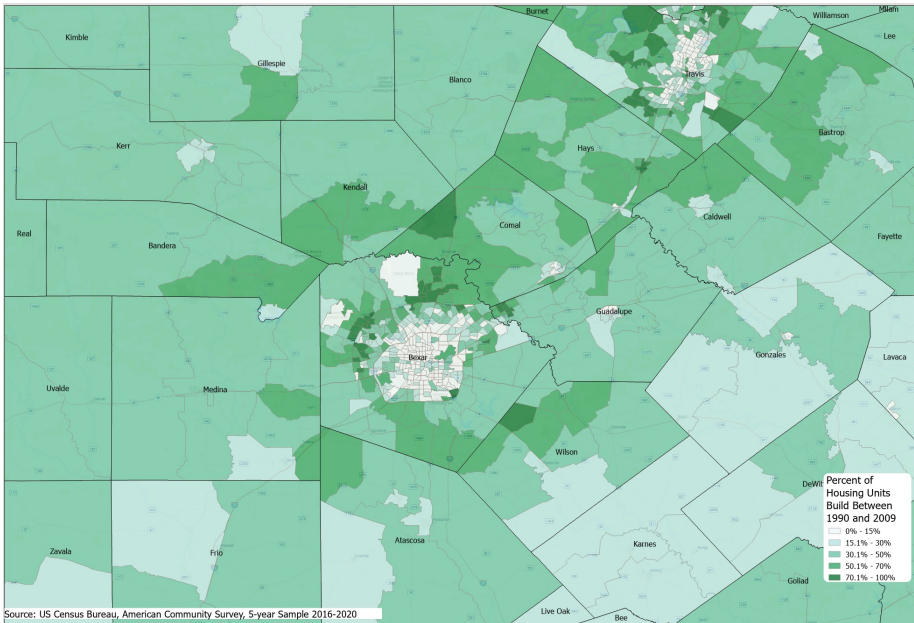
Before
1970



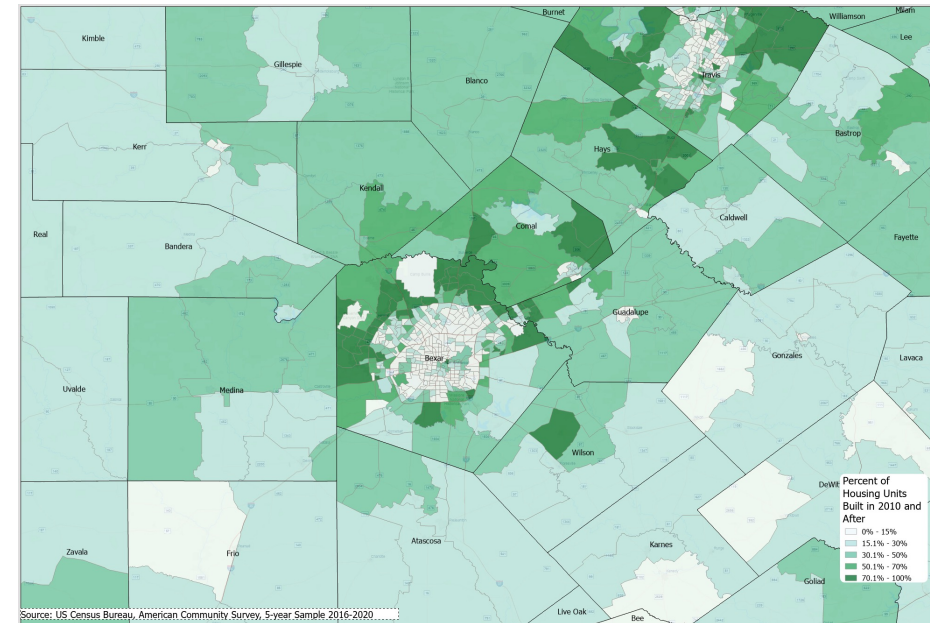
1970-
1989



1990-
2009



2010
and
after

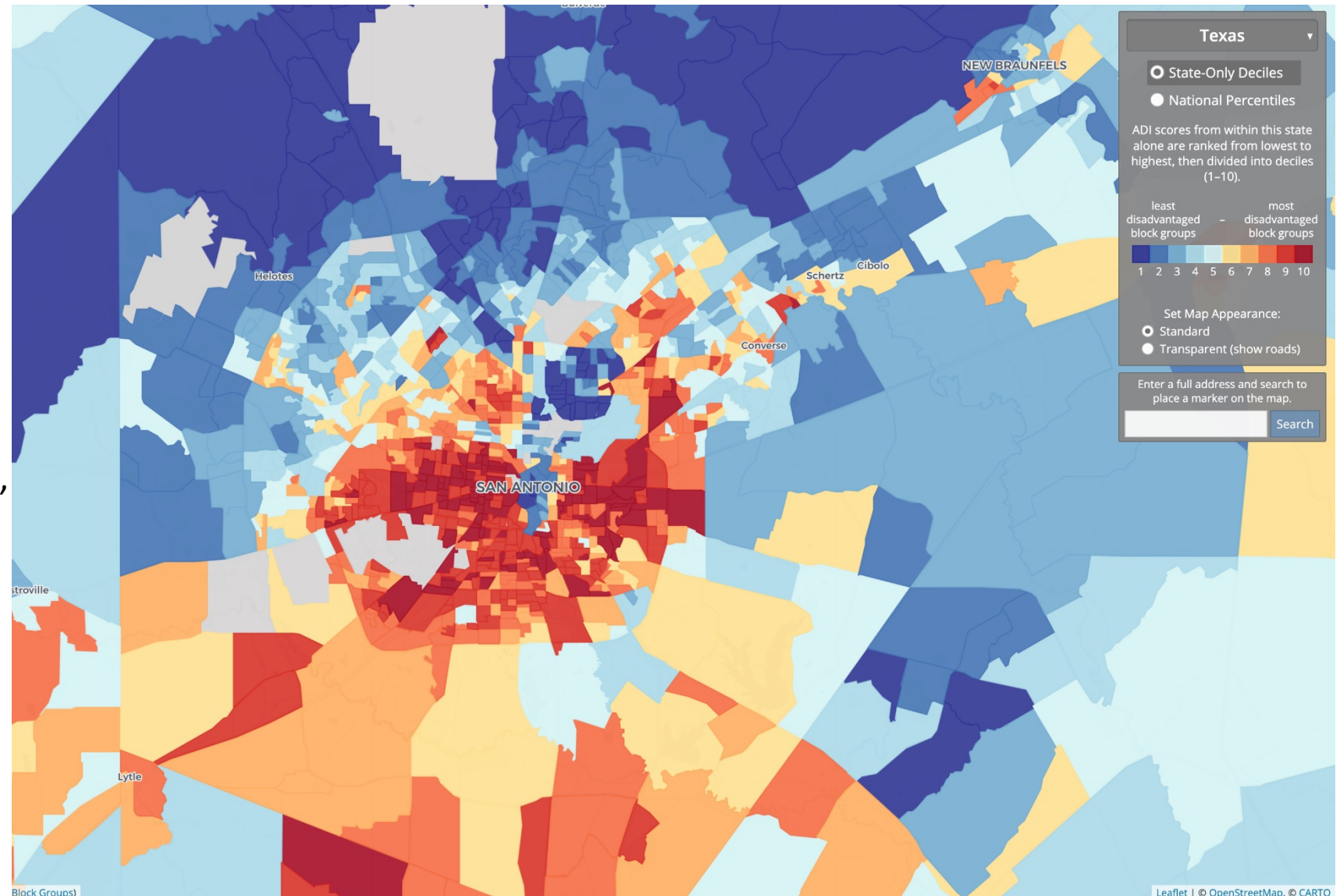


Area Deprivation Index in the San Antonio Area, Census Block Group, 2015-2019



Area Deprivation Index (ADI)

A Measure of socioeconomic disadvantage in a region of interest (e.g. at the state or national level). It includes factors for income, education, employment, and housing quality using data from the American Community Survey

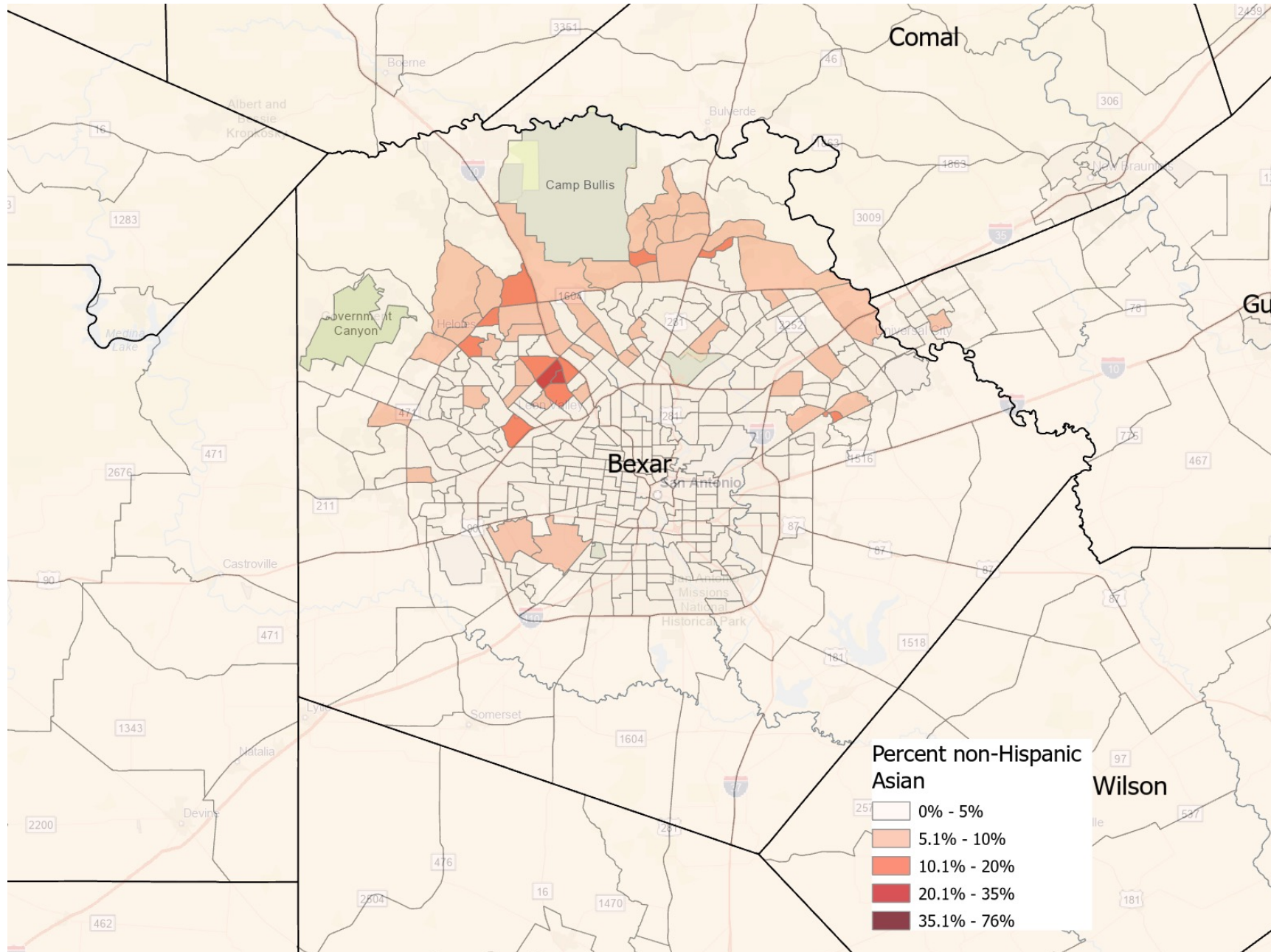


Race/Ethnic Composition, 2022



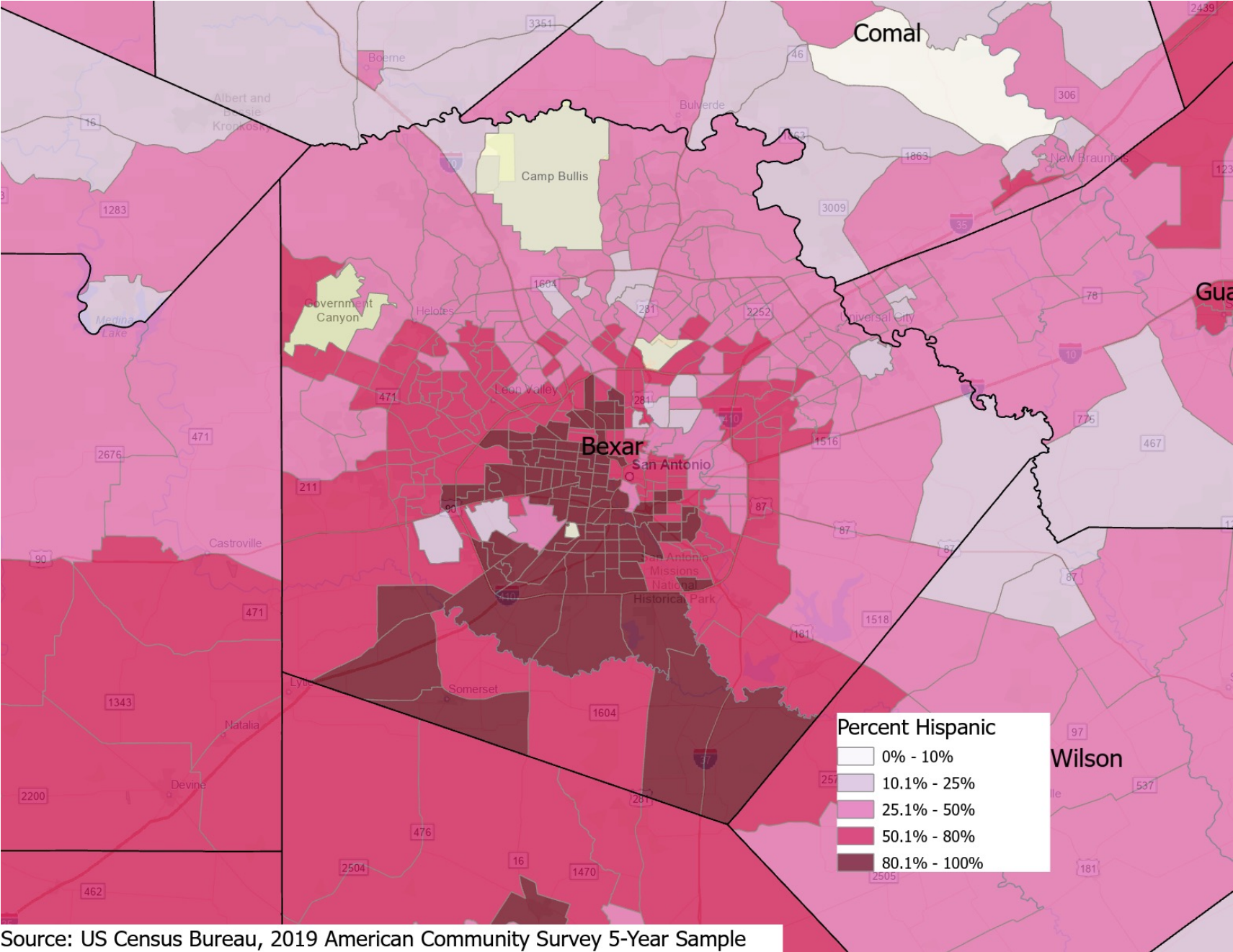
Race and Hispanic Origin	San Antonio	Bexar County	Texas	United States
Black or African American alone	6.5%	9.1%	13.4%	13.6%
Asian alone	3.0%	3.5%	5.7%	6.3%
Hispanic or Latino	65.7%	61.3%	40.2%	19.1%
White alone, not Hispanic or Latino	23.1%	25.9%	39.8%	58.9%

Percent of persons who identify as non-Hispanic Asian, Census Tracts, 2019



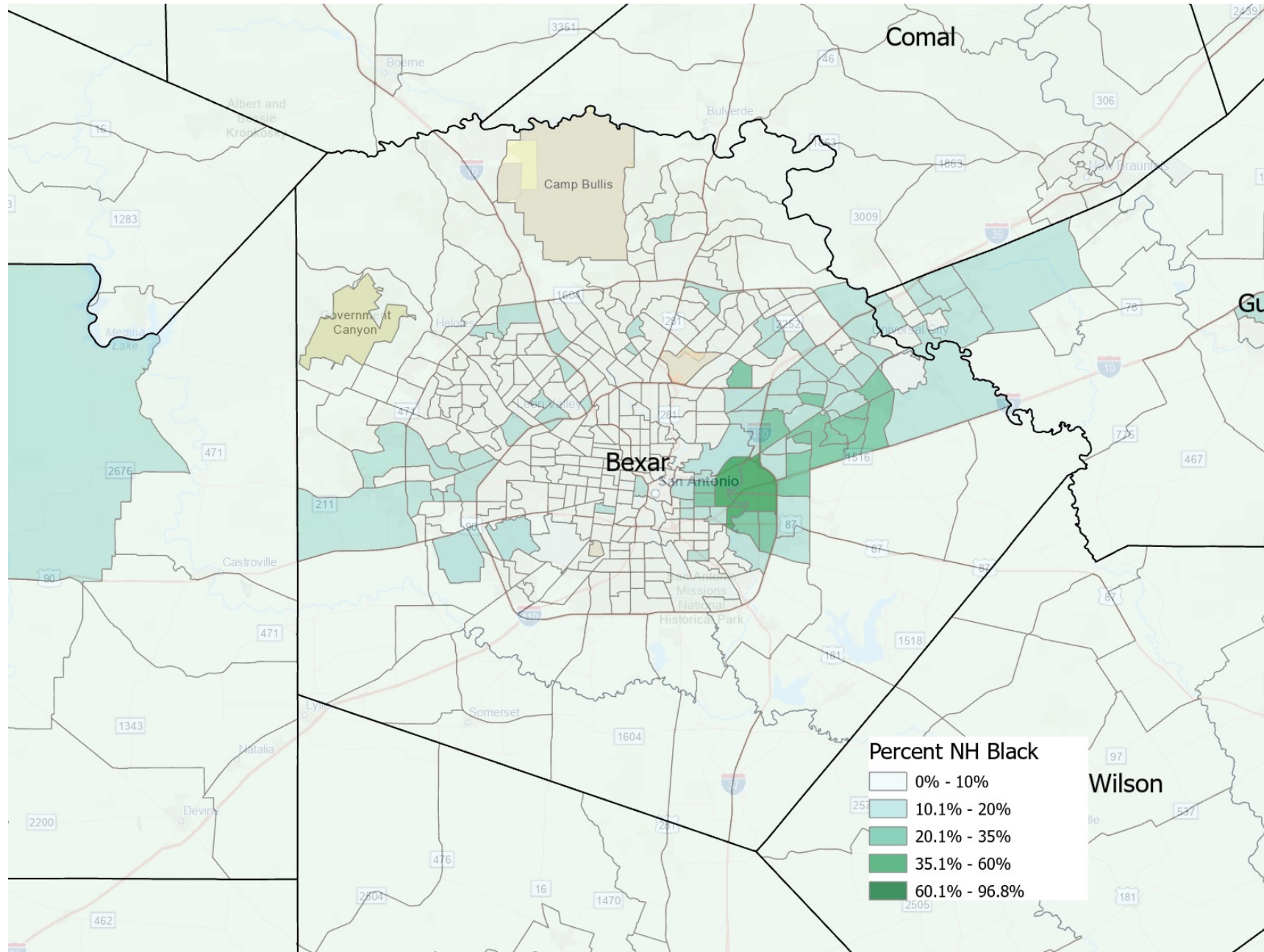
Source: US Census Bureau, 2019 American Community Survey 5-Year Sample

Percent of persons who identify as Hispanic, Census Tracts, 2019



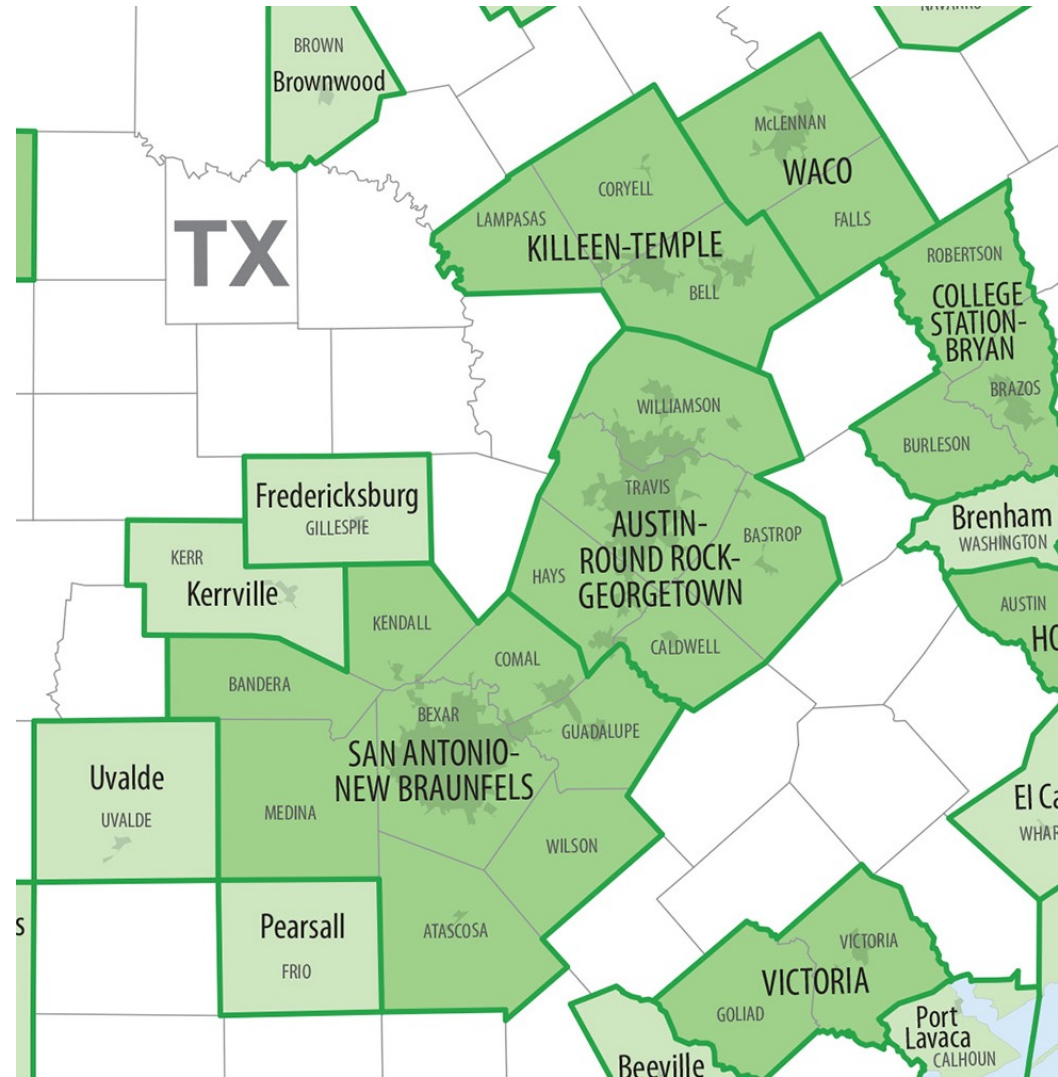
Source: US Census Bureau, 2019 American Community Survey 5-Year Sample

Percent of persons who identify as non-Hispanic Black, Census Tracts, 2019

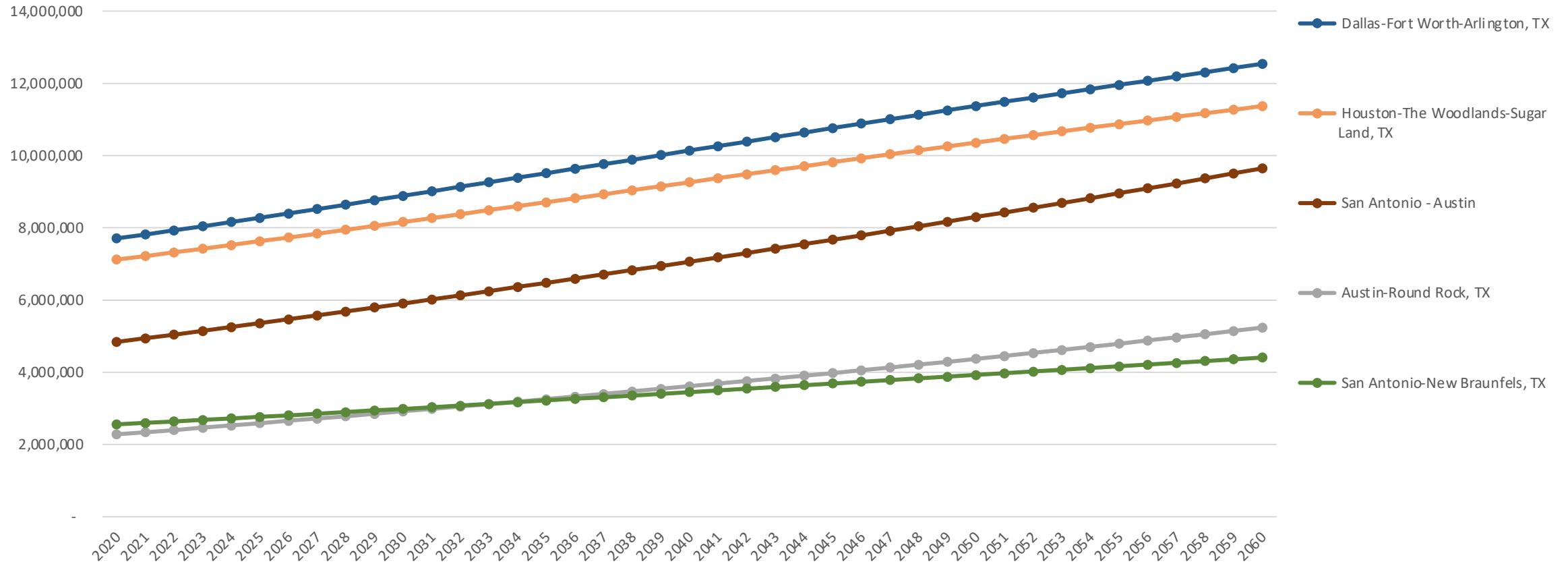


Source: US Census Bureau, 2019 American Community Survey 5-Year Sample

Metropolitan Statistical Areas



Projected population of select metropolitan statistical areas, 2020-2060





Visit our website
demographics.texas.gov



Interactive Maps

demographics.texas.gov/



Census 2020



Census 2020

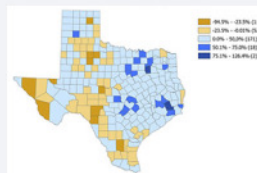


Redistricting Resources

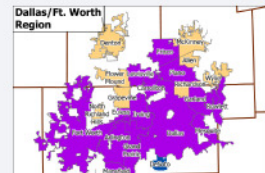
TDC Decennial Census Infographics



Who Contributed to Texas' Population Growth? 2010-2020

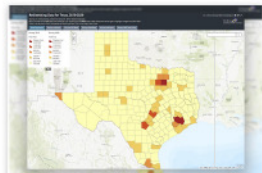


Population Change for Texas Counties, 2010-2020



Texas Places, 2010-2020 Ethnic and Racial Diversity Continues to Grow

TDC Decennial Census Interactive Tools



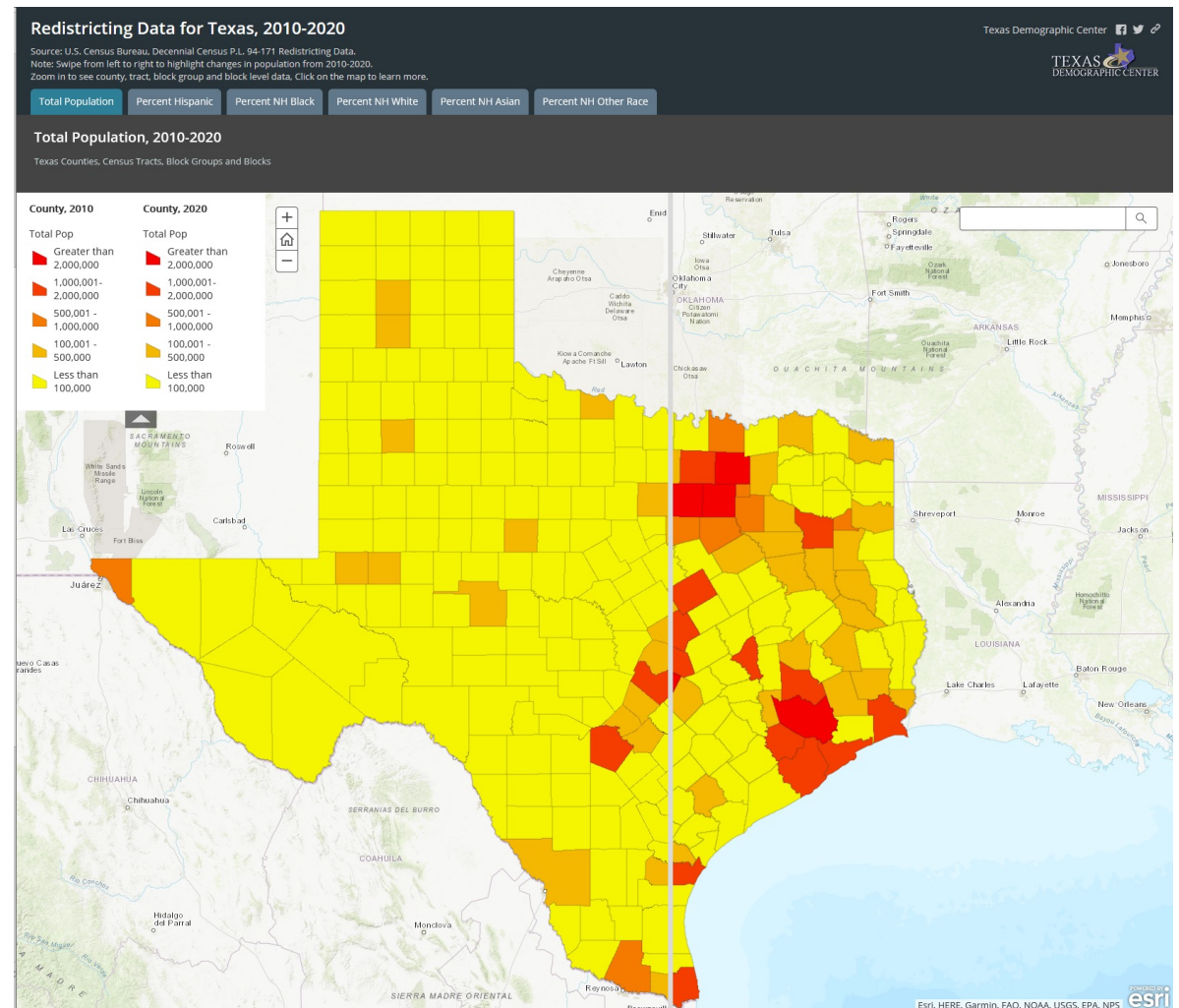
Redistricting Data for Texas Counties, 2010-2020



Redistricting Data for Texas Counties, 2000-2020



Redistricting Data for Texas Places, 2000-2020



Follow us on social media!

We post every Monday



@TexasDemography



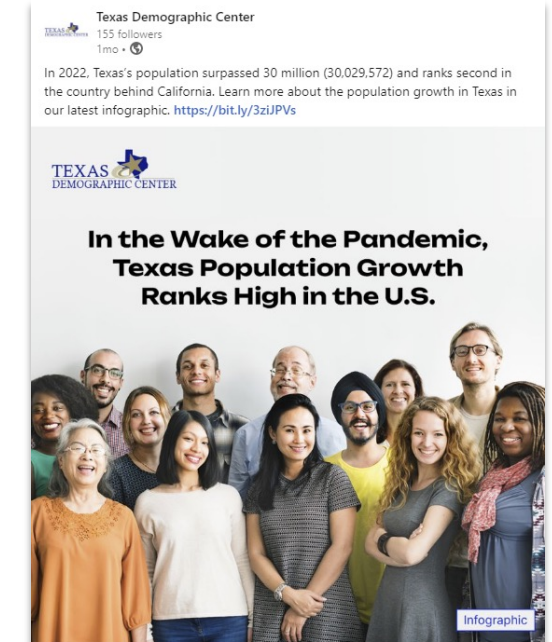
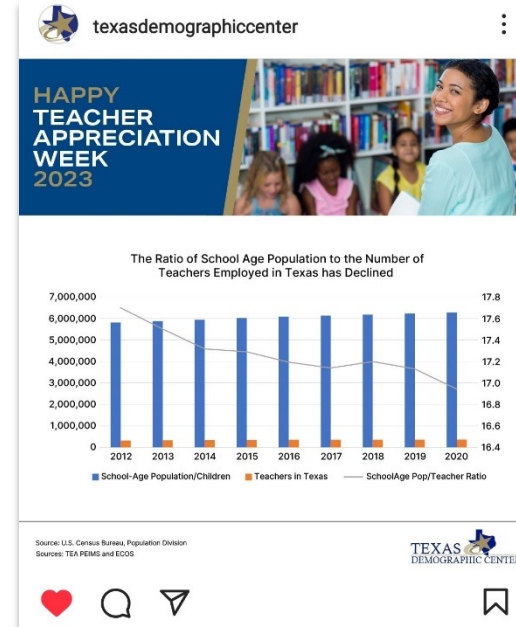
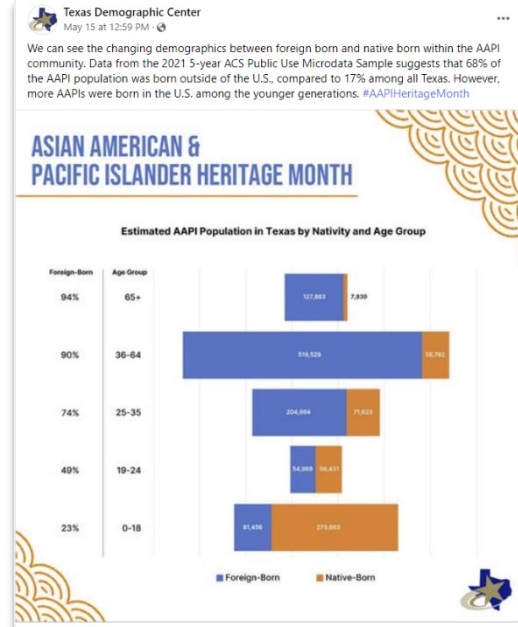
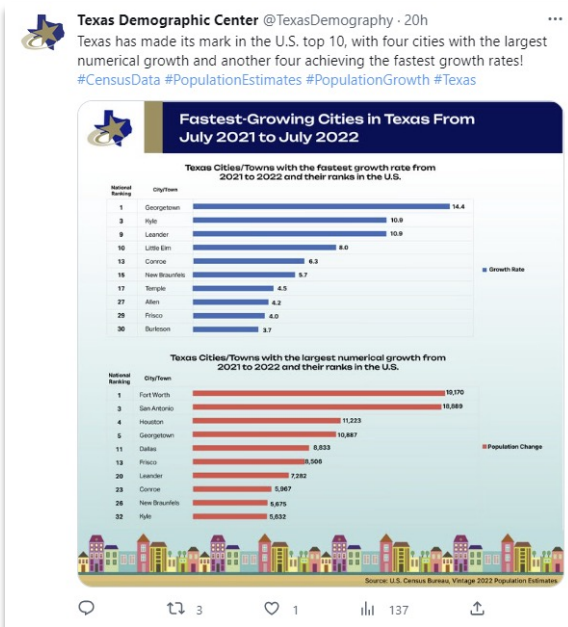
Texas Demographic Center




texasdemographiccenter



Texas Demographic Center



Lloyd Potter, Ph.D.

 (210) 458-6530

 TDC@UTSA.edu

 demographics.texas.gov

 @TexasDemography

